

How to set up the developing environment of MSRDS

When you download the sample codes from our website, you might encounter the difficulties that you can't or you don't know how to make them work.

Scope:

You will learn the following things in this handout:

1. Where some important directories locate after you installed MSRDS.
2. How to create a DSS project on VS 2008.
3. How to make others' sample code work on your computer.

Part1. The location of some important directories:

1. The "output" directory:

Every service after you successfully compiled as Decentralized Software Service. The essential files will be output to the **bin** directory where it locate at: (and the VPL will read the component here)

C:\Documents and Settings\Isaac.CAECE-8KDULD6UJ\Microsoft Robotics Dev Studio 2008 Express\bin

Most of time it's your user path.

And here is the directory of MSRDS.

Reference: Handout 1, Page2, Note. 1.

2. The "samples" directory:

Here is the location where the samples of MSRDS are:

C:\Documents and Settings\Isaac.CAECE-8KDULD6UJ\Microsoft Robotics Dev Studio 2008 Express\samples

3. The tutorial for DSS directory:

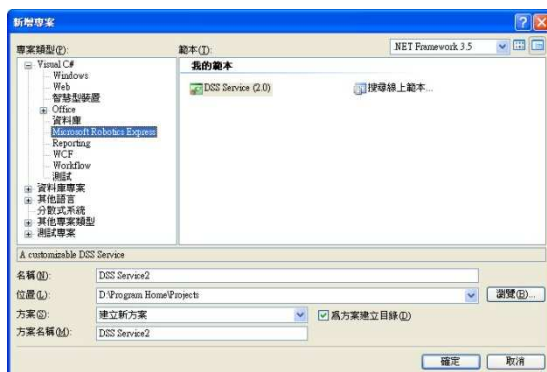
C:\Documents and Settings\Isaac.CAECE-8KDULD6UJ\Microsoft Robotics Dev Studio 2008

Express\samples\ServiceTutorials

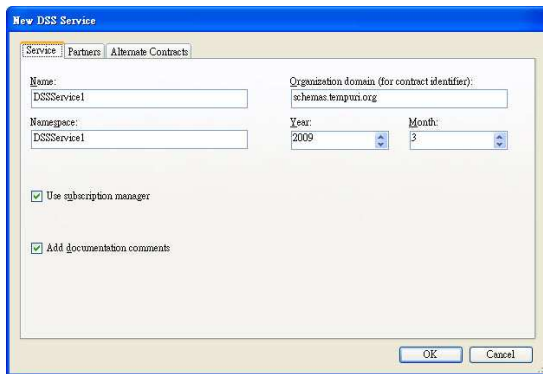
Part2. How to create a DSS project on Visual Studio 2008:

After you successfully installed MSRDS, you can simply create the DSS project in VS 2008. Of course, you can install MSRDS on VS 2005. However, I strongly suggest readers to do it on VS 2008.

1. Create a DSS project:



2. Use default options:



Part3. How to make others' code work on your computer:

The following things might be the factors why others' code can't successfully run on your environment:

1. The property of the project:

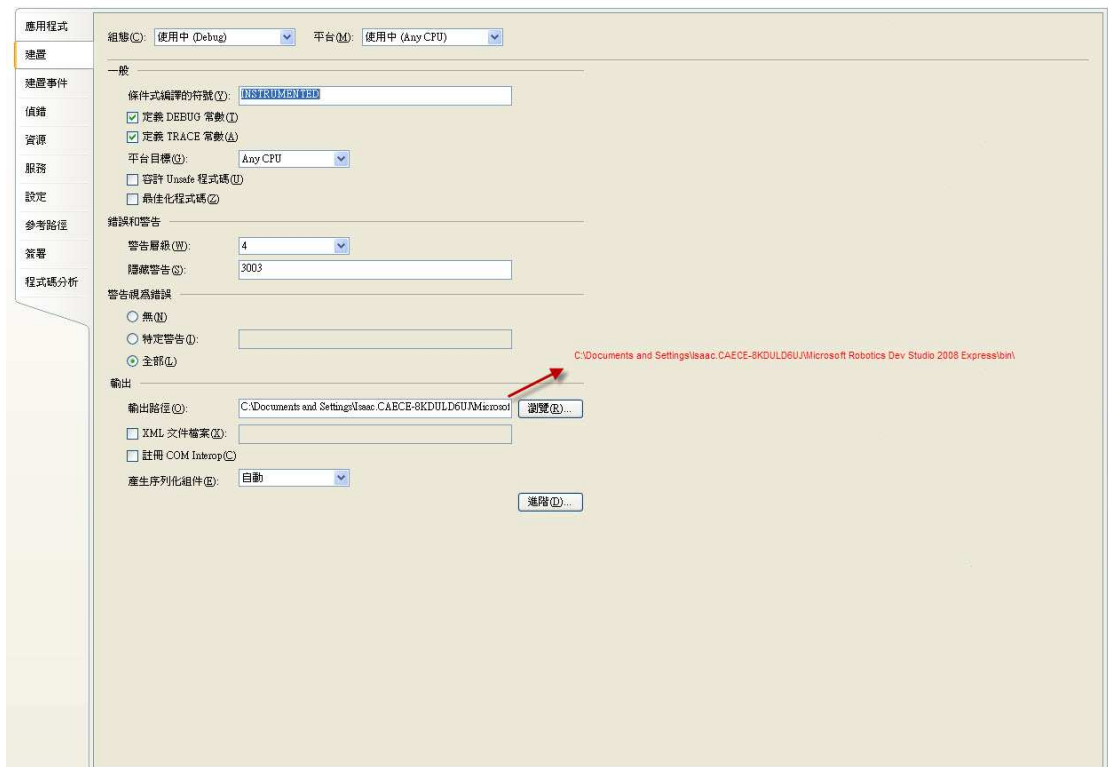
open the property page of the project, and modify the directory of others to yours.

C:\Documents and Settings\Isaac.CAECE-8KDULD6UJ\Microsoft Robotics Dev Studio 2008 Express\

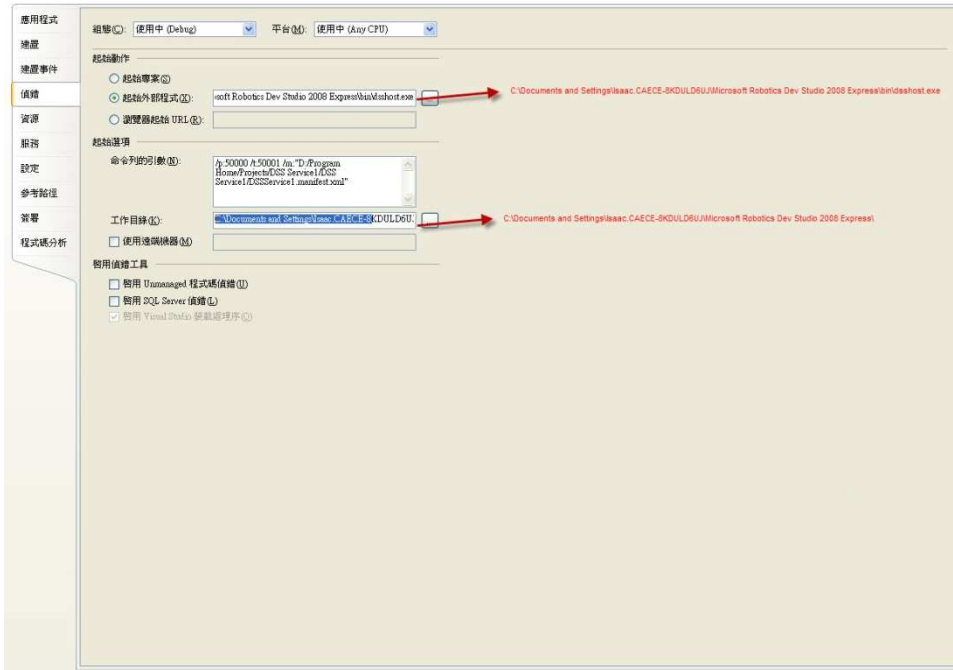
to

your installed path

a. The output path:



b. Debug information:



2. The signature of the project:

- A. Generate the key file with SN (Strong Name) tool:

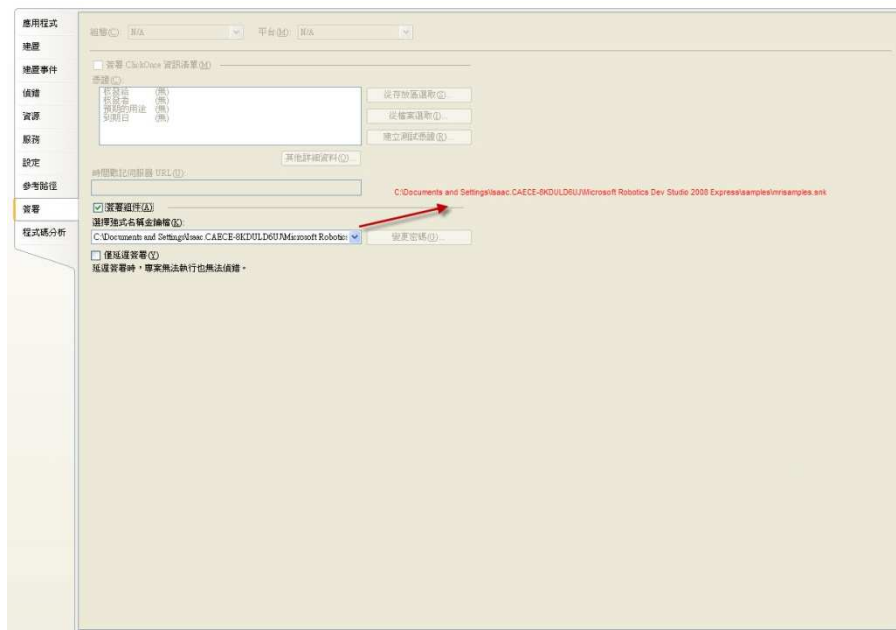
Open the command line prompt and enter the following texts : **sn-k key.snk**

- B. Put the key file in your project directory:

In fact, you only have to put in your project directory and change the path in "AssemblyInfo.cs" to indicated it like [assembly: AssemblyKeyFile("Mykey.snk")]

- C. If it still doesn't work out, try to put the key file to the "bin" directory.

Reference: <http://support.microsoft.com/kb/328379/zh-tw>



If readers still have any problem, please contact the TA isaac@caece.net